



2011 OK ASLA Awards Entry

Project Name: Skiatook Central Park

Project Name:

Skiatook Central Park

Project Location:

Skiatook, Oklahoma

Project Purpose:

The “project purpose” was to provide a signature park and playground with unique, flexible spaces for children’s play, special events and all types of gatherings. The goal was to design a signature, first of its kind, town park that creates a recreation destination for the region and gives the locals a place to picnic, play, and be active within the Town of Skiatook.

As the trail head to the Osage Railroad Trail, it was important to utilize the opportunity to make the Town of Skiatook a new destination. The challenge was to restore the unused railroad property and other natural resources into community assets that maximize beneficial economic, ecological and social uses and ensure protection of human health and the environment.

Project Impact:

The park has created spaces where people have a sense of place within their environment. It is the result of a balancing act between the requests of local residents and connectivity to nearby communities with the conservation of open space. Thoughtful planning provided an outlet for a creative solution.

The Open space network was carefully designed to preserve buffers for residential neighbors and natural areas while accounting for planned community events.

Skiatook Central Park has served as a new model of engaging residents in shaping their communities which is needed in order to emphasize change by promoting awareness on the part of designer and resident of the social and ecological elements of day-to-day life.

General Design (Constructed Project)



Role of the Landscape Architect

- The Landscape Architect served as the prime/lead for the project with responsibility to facilitate and manage the overall process from conceptual design through construction.
- As the prime/lead the LA either provided or guided the overall aesthetics of the site elements including the architectural features. The LA hired and coordinated the efforts of the architect and engineer through the entire design process.
- The LA was responsible for managing the general contractor through all aspects of the construction and coordinating activities of specialized subcontractors (splash pad, safety surface, playground). This included pay application review, budget review, and coordinating client purchased features.
- The LA was responsible for managing (3) individual contracts through the construction process. Due to funding and grant allocations, the park consisted of a General Construction contract, Landscape / Irrigation contract, and Restroom Construction contract.
- The LA was also responsible for assistance with funding coordination and grant applications.

Special Factors and Project Significance

- Vision 2025 funds constructed a multiuse trail along what was previously the Osage Railroad in Tulsa and Osage Counties, providing opportunities for transportation, recreation and exercise. The trail is a scenic and safe connection for users traveling from Tulsa to Highway 20 in central Skiatook with recreational and fitness opportunities along the way. The Osage Trail presents fantastic walking, jogging and bicycle riding opportunities with scenic greenways along the way.
- At the terminus of the trail sits a large area of unused land which was once the Osage Railroad Station. Roughly 9.5 acres and located in downtown Skiatook, Oklahoma. The Osage Railroad Station was abandoned many years ago leaving an open space that was full of dilapidated buildings, railroad ties and eye-high weeds
- The park's layout features a pond with a pedestrian bridge, boardwalk, playground equipment, picnic shelters, decorative lighting, parking, splash pad, restrooms, landscape, and a system of walking paths connecting the Osage Prairie Trail to the park. The park program was driven by Pioneer Days, an annual event held on the site. The need to accommodate Pioneer Days vendors, carnival rides, dinning tents, and parking were the primary concerns when layout of the park was initially examined. The current site is designed to accommodate (10) 60' diameter carnival rides, (8) smaller 25' diameter rides, (32) 12'X12' vendor tents without electric, (27) 12'X12' vendor tents with 110 electric, and (6) vendor tents with 220 electric. To accommodate semi-trucks hauling carnival rides through the park, concrete walks were reinforced with 8" concrete and mountable curbs were provided as well. Designated areas for carnival rides were reinforced with a structural fill to allow for excessive weight.
- Pre-existing site conditions made it necessary to relocate (2) gas lines, remove a city street crossing the site, and import structural fill to accommodate the large amounts of unsuitable fatty clay found on site. Due to the lack of topography and the amount of storm water runoff from city streets, the site often remained saturated for weeks at a time. The pond, just under (1) acre in size creates a storage facility for the storm water while having several feet of compensatory storage in the event of flooding. Wetland plantings were used on the downstream side of the spillway in order to help absorb overflow from the pond and create a new ecosystem within the park.

2011 OK ASLA Awards Entry

General Design (Constructed Project)

Project Name: Skiatook Central Park



Site Plan



2011 OK ASLA Awards Entry

General Design (Constructed Project)

Project Name: Skiatook Central Park



Schematic Plan



2011 OK ASLA Awards Entry

General Design (Constructed Project)

Project Name: Skiatook Central Park



Schematic Graphics



2011 OK ASLA Awards Entry
Project Name: Skiatook Central Park

General Design (Constructed Project)



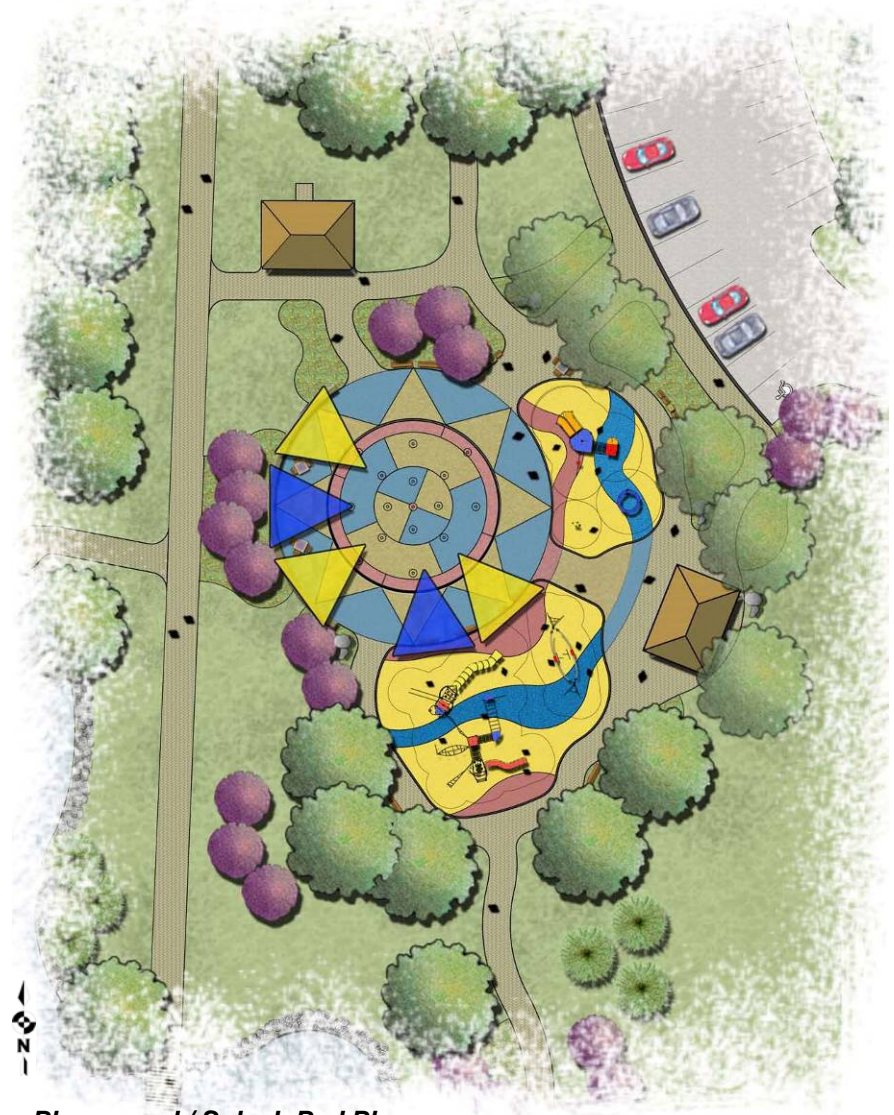
Schematic Graphics



5th Street Crossing



Entry Along Highway 20



Playground / Splash Pad Plan

2011 OK ASLA Awards Entry

Project Name: Skiatook Central Park

General Design (Constructed Project)



Schematic Graphics



Playground / Splash Pad Oblique Aerial



Additive Alternate: Bouldering Area



Entry Sign



Pond View

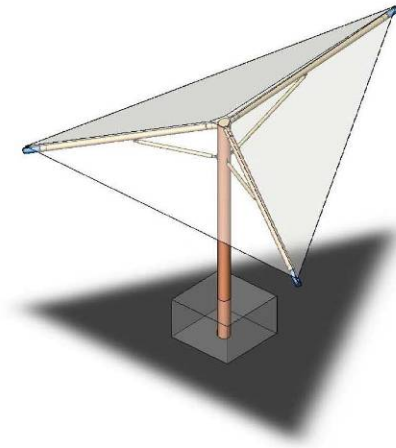
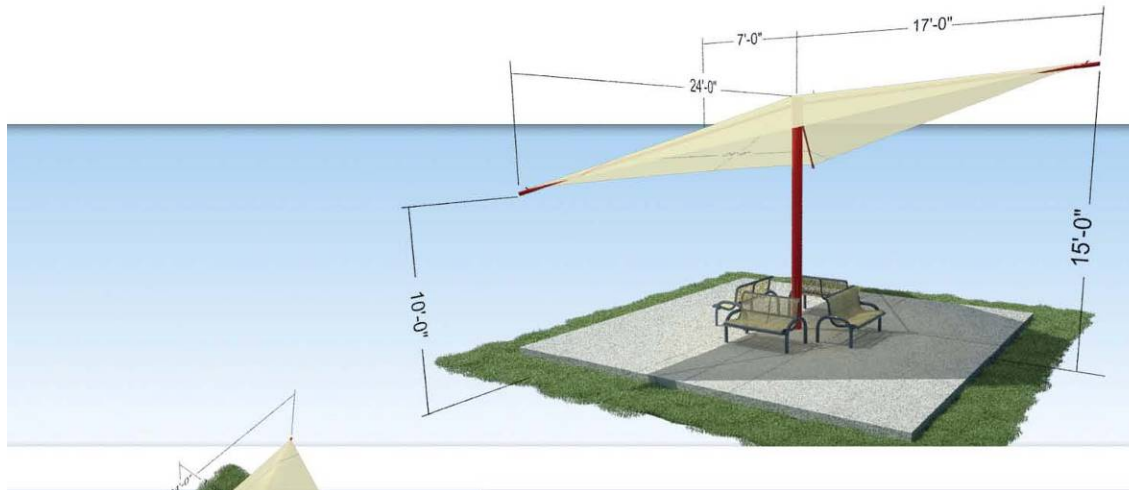
2011 OK ASLA Awards Entry

Project Name: Skiatook Central Park

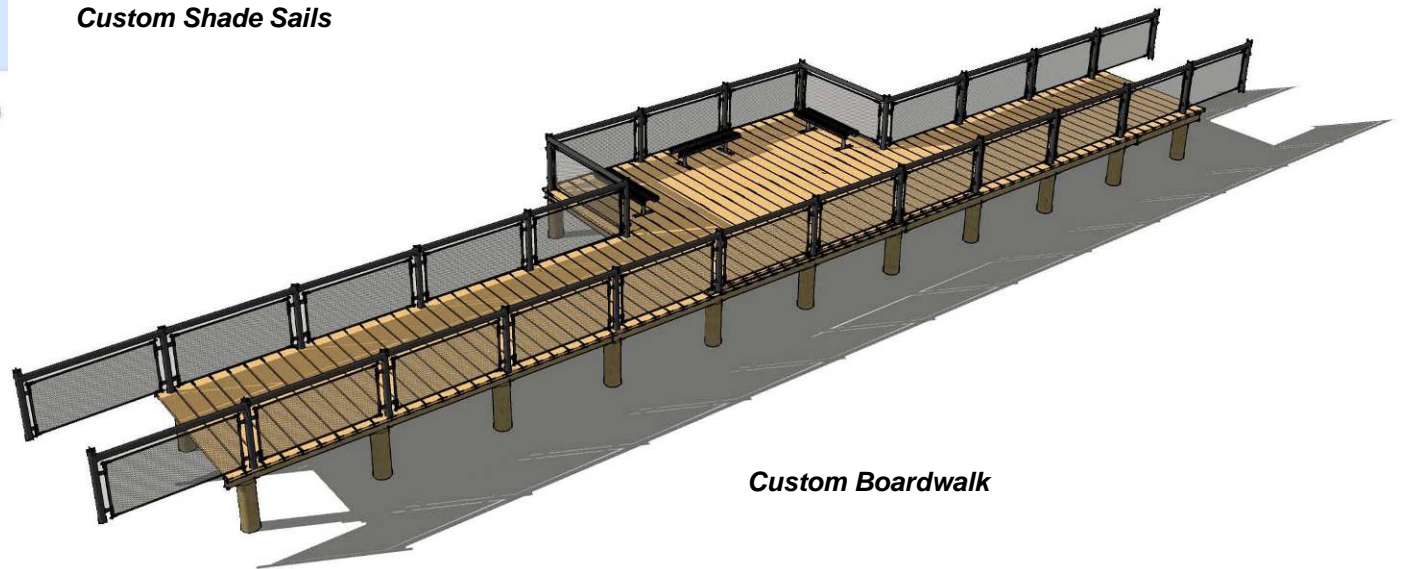
General Design (Constructed Project)



Schematic Graphics



Custom Shade Sails



Custom Boardwalk

2011 OK ASLA Awards Entry

General Design (Constructed Project)

Project Name: Skiatook Central Park



Park Elements: Shelter and Restroom



Picnic Shelter



Picnic Shelter



Existing Shelter Rehabilitation



Picnic Shelter



Restroom



Restroom



Restroom

2011 OK ASLA Awards Entry
Project Name: Skiatook Central Park

General Design (Constructed Project)



Thematic Patterning



Entry LED Illuminated Monument



Picnic Shelter



Entry Sign



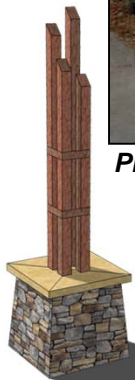
Primary LED Illuminated Monument



Secondary Trail Monument



Restroom



The distribution of recurrent thematic concepts throughout the park give a sense of unity throughout. The goal was to subtly tie all the park elements together with a unifying theme and to create a holistic and integrated spatial organization. The vertical steel columns found in park monuments, park signs, architecture of restroom and shelter are loosely themed from the old rail station and railroad ties that were once located on the site. The use of amber colored LED up-lights in the center of the monuments creates another element of interest in the evening.

2011 OK ASLA Awards Entry

General Design (Constructed Project)

Project Name: Skiatook Central Park



Park Elements: Restroom



- The parks main support facility is a custom designed Men / Women restroom. Following all ADA requirements, the restroom offers safe and accessible use for all park visitors.

- Since the parks opening in late fall of 2010, the owner has installed security cameras that are monitored by the local police department. The proximity of the restroom & cameras to the splash pad and playground create a safer environment for the children and reduces the potential risk of vandalism.

- Free Wi-Fi is broadcasted from the restroom for Park users.

- Funding for the restroom was obtained through a TEA-21 grant.



2011 OK ASLA Awards Entry

General Design (Constructed Project)

Project Name: Skiatook Central Park



Park Elements: Pond



Boardwalk & Fountain

- Prior to the construction of Skiatook Central Park, the site was comprised of improperly engineered bar ditches and un-maintained turf.
- At just one acre in size, the new pond offers a great site amenity but more importantly deals with the problem of flooding by properly handling storm water run-off from surrounding streets and neighborhoods.
- The pond is surrounded by a meandering walking path with several rest areas along the way.
- Fountain and aeration skids were installed to properly oxygenate the water for aquatic wildlife.
- A spillway made of native stone was constructed to handle flood events.
- A custom boardwalk with observation deck is one of the parks most popular destinations.
- An overlook or bulkhead was also created to allow for relaxing and enjoyment of the view over the pond.



Bulkhead



Boardwalk



Abutment



Weir / Bridge

2011 OK ASLA Awards Entry

Project Name: Skiatook Central Park

General Design (Constructed Project)



Park Elements: Rest Areas



- Creating different spaces throughout the park was one of the primary goals in making the site useable and accommodating.
- All tables have chairs that are armless and an open space allowing wheelchair access.
- Several of the backless and armless benches are multiuse and are often used as either tables or chairs.
- Light colored furniture helps reduce surface temperature in hot summer months and recurring colors help reinforce the theme.
- Rest areas along the trail system are no more than 200' apart.
- Locating furniture at vantage points on the boardwalk, bulkhead, and throughout the park optimize views.

2011 OK ASLA Awards Entry

General Design (Constructed Project)

Project Name: Skiatook Central Park



Park Elements: Monuments & Sign



Concrete Split Rail Fence Between Monuments



Park Entry Sign



Construction of Entry Monument



South Entrance Into Park



Entry Monument & Planting Beds

2011 OK ASLA Awards Entry

General Design (Constructed Project)

Project Name: Skiatook Central Park



Park Elements: Splash Pad



- Providing a resource for the children to utilize in the heat of summer, the splash pad offers an interactive and entertaining escape.
- Integral colored concrete creates a playful and fun design for kids to enjoy while reinforcing the theme. To provide traction a medium broom finish was applied to the concrete along with a penetrating sealant for vibrant color longevity.
- The splash pad contains a variety of in-ground and above ground sprays providing endless entertainment.
- Seating for the splash pad consist of tables and chairs situated underneath (5) shade sails along with a 2.5' high seat wall creating a buffer between the Osage Trail and the splash pad. The combination of ample seating and shade allows parents to observe without visual hindrances and gives children a retreat from the sun.



2011 OK ASLA Awards Entry
Project Name: Skiatook Central Park

General Design (Constructed Project)



Park Elements: Playground



- Located around the splash pad are (3) playground satellites. Each play area is designed for differing age groups and play levels.
- The use of integral colored concrete between the groups tie them all into one large playground.
- Seating in the playground area consists of (44) varying chairs, (5) benches, (6) tables, & 75 linear feet of seat wall.
- Poured-in-place safety surface allows for a safe, whimsical, and playful environment that ties in with color banding of concrete.
- (5) custom shade sails and picnic shelter provide large areas of protection & a place where parents can relax & enjoy watching their children play.



2011 OK ASLA Awards Entry

General Design (Constructed Project)

Project Name: Skiatook Central Park



Park Elements: Bouldering Area



- Two pre-fabricated boulders
- One custom boulder
- Custom paint to match native stone
- Colored concrete curb around safety zone
- Fibar engineered wood fiber safety surface



2011 OK ASLA Awards Entry

General Design (Constructed Project)

Project Name: Skiatook Central Park



Park Elements: Lighting

- Amber colored LED lights were used to illuminate the steel columns.
- LED lights were used in the picnic shelter.
- Trail lighting consists of xxxxxx
- Accent lighting was used on the pond fountain.